



North-Western State Medical University

**named after
I. I. Mechnikov**





INTRODUCTION

North-Western State Medical University named after I.I. Mechnikov was founded on October, the 12-th, 2011. The University is a major educational, scientific and medical center of the North-Western region of the Russian Federation.

Our University is revering best historical traditions of Russian medical science and proceed the development of medical disciplines of prominent Russian scientific schools established by V.M. Bechterev, E.E. Eichvald, N.V. Sklifosovskiy, D.O. Ott, N.D. Monastyrskiy, G.V. Khlopin, N.N. Anichkov, A.A. Uchtomskiy, S.S. Girgolava and others.

About 7000 students, clinical residents, postgraduate and PhD students undergoing their medical education at the University. Our 35 000 physicians do their postdoctoral training annually at the University.

Today the University carries out its activity in three main directions: medical education, clinical work and scientific research. Close interaction of these three areas let us train high qualified specialists, who can put into practice their up-to-date medical knowledge.

The University today is a key part of the North-Western region of the Russian Federation targeted on the creation and accumulation of a up-to-date medical knowledge, the integration of research with the educational process and medical work.

Rector Otari G. Khurtsilava



North-Western State Medical University named after I.I. Mechnikov was founded in October, 2011 as a result of merger of Saint-Petersburg State Medical Academy n. a. I.I. Mechnikov and Saint-Petersburg Medical Academy of Postgraduate Studies. Both institutions named above have a unique history, which has been created over than 100 years.

Our heritage is accumulated by precursor's considerable authority of Alma Mater, and hundreds of thousands of trained professionals. Cultural traditions and scientific schools compose a strong fundament for the successful development of the University.

Clinical Institute of Grand Duchess Elena Pavlovna – GIDUV- SPb MAPS was founded in 1885 when Professor E.E. Eikhvald has become its first director. The Saint Petersburg State Medical Academy (SPbSMA) dates back to the Psychoneurological Institute which was set up in 1907 by well-known psychiatrist, academician V.M. Bekhterev. In 1994 the Academy was given the name of the outstanding Russian scientist and Nobel prizier in medicine I.I. Mechnikov, which the University is bearing now.

HISTORICAL
BACKGROUND



ACADEMIC WORK

Educational work at the University is based on the concept of the multi-stage system of specialists training on the programs of various levels of medical education. There is University education training, training in the programs of higher education, as well as post-graduate training of doctors.

Our University encloses 112 departments, which are consolidated in 9 faculties: Faculty of general medicine (consists of 24 departments), medical-prophylactic Faculty (consists of 29 departments), the surgical Faculty (consists of 13 departments), therapeutic faculty (consists of 15 departments), the pediatric Faculty (consists of 10 departments), medical - biological Faculty (consists of 10 departments), the Faculty of foreign students, the Faculty of education for nurses, health care and social work (consists of 5 departments), dentistry faculty (consists of 6 departments).

At present 4,500 students, for about 800 of them from foreign countries are studying at the University. More than 2400 young specialists do their postgraduate study at the University today. Up to 35 000 specialists undergo their short- and long- term postdoctoral training annually.

Training of specialists at the University is based on the integration of traditional and innovative educational technologies. The quality of the educational process is controlled by an independent testing center, and training centers are hastening educational process to real practical work. Along with increasing of professional experience the great sense is directed upon the development of the doctor's personality as the representative of the most humane profession.



At the University is established a comprehensive system of educational work, aimed to encourage identity improvement of students, the formation of humanistic consciousness and active civil position, raise the cultural level, and inculcate of skills of a healthy life style. Great attention is paid to support of talented youth, the disclosure of creative potential of students, maintenance and enhancement of the historical and cultural traditions.

At the University are created:

- Student council
- The council of educational work
- The coordination Council of student's organizations
- Institute of curators and the Council of senior curators
- Amateur talent club
- Councils of student's hostels
- Students guild

The solution of important issues of life and activity of student's youth, the development of social activity, promotion and implementation of social initiatives of students are carried out by the Students' council of the University, which exists as a permanent representative and coordinating body of the student self-administration system.



CLINICAL WORK

The clinical work in North-Western State Medical University named after I.I. Mechnikov is provided by using 1645 beds in 14 medical profiles:

- Hospital n. a. Peter the Great (Piskaryovsky pr., 47) – 1230- bed clinic of therapeutic profile (11 departments) and surgical profile (14 departments).
- Clinic n. a. E.E.Eichvald (Kirochnaya str., 41) - 225 - bed clinic including two cardio surgery departments, rheumatologic department, therapeutic and surgical mini-hospitals.
- Medical- preventive center (Zanevsky pr., 1/82) - 120 - bed clinic. Includes two therapeutic departments, neurology department, ophthalmology out – and in - patient departments, dental outpatients' clinic.
- Mycology clinic is located in the Research Institute of Medical Mycology n. a. P.N. Kashkin (Santiago de Cuba str., 1/28). The clinic includes 70 beds dermatology department, mycology department and an outpatients' department.
- Family medicine center (Prosvesheniya pr., 45) consists of a branch of a day-care hospital, center of medical cosmetology and an outpatients' clinic.

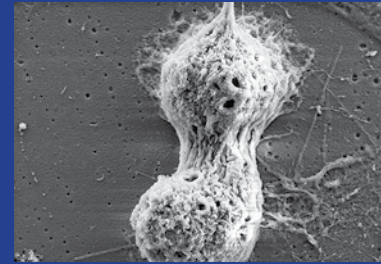
Every year the clinical departments of the North-Western State Medical University named after I.I. Mechnikov provide high-quality medical assistance for about 40 000 patients at the hospital and to 400 000 in the outpatient setting.



Various modern diagnostic approaches such as digital magnetic resonance and computer tomography with high-resolution, angiography and x-ray installations, the systems of mapping of the heart rhythm, ultrasonic units of expert class, digital automatic laboratory analyzers are in wide use at the University. Two haemodialysis centers are operated at the institution.

University's clinics are equipped with the modern facilities, and provide all spectrum of hi-tech medical assistance. In the surgical clinics wide spectrum of unique heart and vessels surgery are made routinely.

One of the largest centers of genetic engineering bio-therapy in the country operates successfully at the University, where patients with severe systemic autoimmune diseases may receive modern innovative assistance. The largest Russian bank of umbilical cord blood samples belongs to the University structure as well.



SCIENTIFIC WORK

Research work at the University is carried out in accordance with the priority directions of biomedical sciences development and modern trends in higher medical education and is aimed to introduce the results of the scientific research into everyday practice.

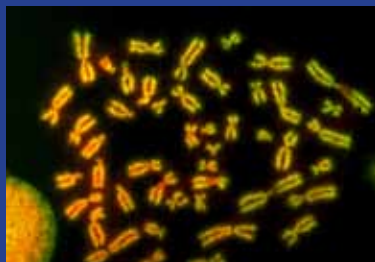
Scientific researches at the University are conducted by two research institutes, six research laboratories and departments.

The University pays great attention to the research, having coordinating scientific council, scientific commission and the Local Ethics Committee.

Very important for the development of scientific work and maintenance of research capacity is work with students and young scientists and specialists. Four hundred seventy people are engaged in postgraduate study and research work at the University. The Council of young scientists and specialists and the Council of student scientific society work actively at the University.

Important for the development and multiplication of the scientific potential of the University is a creative and scientific cooperation with medical institutions in Russia and abroad.

The University publishes such magazines as: "Vestnik SZGMU n.a. I.I.Mechnikov" ("SZGMU n.a. I.I.Mechnikov Herald"), "Skoraya meditsinskaya pomosh'" ("medical emergency service"), "Effirentnaya terapiya" ("Efferent therapy"), "Rossiyskiy semeinyi vrach" ("Russian family doctor"), "Meditsinskaya micologiya" ("Medical mycology"), "Profilacticheskaya i klinicheskaya medicina" ("Preventive and clinical medicine"). All of them are recommended by the High Certifying Commission of the Ministry of education and science of the Russian Federation.



Research Institute of mycology n.a. P.N. Kashkin is a greatest mycological center of the Ministry of Health and Social Development of the Russian Federation and has the status of the first reference institution of medical mycology in Russia. Mycological monitoring laboratory and biology of fungi, molecular genetics microbiology, immunology and allergology, morphology and cytology, Russian largest collection of pathogenic fungi function within the framework of the Research Institute.

Research Institute of endocrinology carries out fundamental and applied research in contemporary endocrinology and develops methods of treatment of various forms of endocrine pathology. Research Institute consists of Scientific-Research Department of clinical endocrinology, laboratory of experimental endocrinology and chromatography.

Effective research work is carried out in the Research Laboratory of the University:

- The Central research laboratory
- The research laboratory of innovative methods of functional diagnostics
- The research laboratory of cellular technologies
- The research laboratory of high laser and magnetic technologies
- The research laboratory of innovative technologies of medical navigation.
- The research laboratory of the Holter monitoring

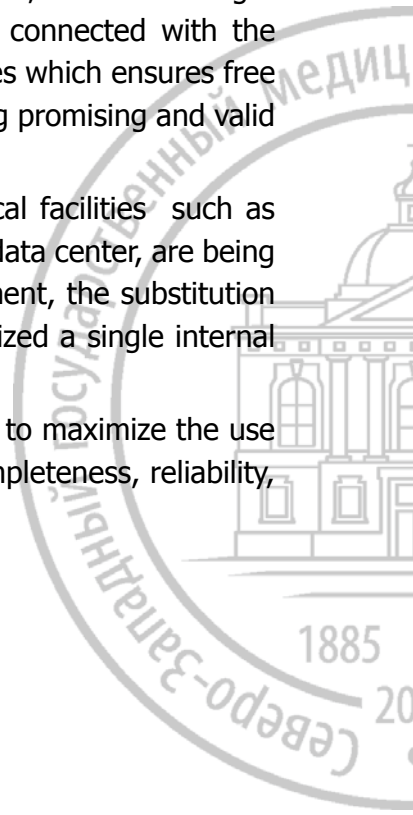


INFORMATION TECHNOLOGIES

The successful development of the educational, scientific, medical management of the University's activity in many respects is connected with the formation and use of advanced information technologies which ensures free and fast access to the necessary information for making promising and valid solutions.

Now at the University are provided improved technical facilities such as construction and putting into operation of the modern data center, are being upgraded local computing networks, computer equipment, the substitution of telephone system is being on the process, is organized a single internal telephone network between all bases of the University.

The creation of integrated information space will allow to maximize the use of the main properties of data, such as objectivity, completeness, reliability, adequacy, accessibility and relevance.





The careful attitude to the historical and cultural traditions is one of the most important part of the University's activities.

On the territory of the University there are monuments of I.I.Mechnikov (sculptor L.V.Sherwood), the Grand duchess Elena Pavlovna (sculptor A.V.Degtyarev), professor E.E. Eikhvald (sculptor A.V.Degtyarev), professor P.N. Kashkin (sculptor A.V.Degtyarev).

A number of departments bear the names of its founders; there is a memorial plaque devoted to outstanding scientists, who worked at the University during various periods of life.

At the University museums are established:

- SZGMU n.a. I.I.Mechnikov History Museum
- The museum of forensic medicine with thanatology center
- Museum of anatomy
- Museum of dentistry.

Church of the Holy Duchess of Elena equal to the apostles and the church n. a. the Holy Apostles Peter and Paul have become the living symbols of the historic ties of times and spiritual revival recovered in the 90-s of XX century.



191015, Russia, Saint-Petersburg, Kirochnaya ul. 41,

Phone: (812) 303-50-00, Fax: (812) 303-50-35

www.szgmu.ru