



# **IZHEVSK STATE MEDICAL ACADEMY**

## **Izhevsk, Russia**

Study MBBS in Russia

# History of ISMA

The establishment and development of the Izhevsk State Medical Academy is inseparably linked with the history of the Udmurt Republic and Russian Federation. The Izhevsk State Medical Institute was founded in 1933, due to the urgent need of medical personnel in the developing Ural and Volga regions in Russia. Prominent medical researchers and scientists from different parts of Russia were invited to work in the institute (prof. V.N. Parin, prof. S.Y. Strelkov, prof. N.G. Stadnitsky, prof. B.A. Chentsov and others).

## ISMA today

Izhevsk State Medical Academy is a leading higher medical education provider in the Russian Federation. It is proud of its highly-qualified teaching staff, advanced researchers and experienced physicians whose names are world-famous.

The academy was established in 1933 and over the course of 80 years it has trained more than 21,500 doctors and nursing managers. At present, 351 teachers including 86 Doctors of Medicine and 212 Candidates of Medicine provide a high level of teaching at 52 departments and 28 clinical bases of the academy. Over 2,800 students study at the academy including the foreign ones.

The academy has been training international students since 1988. Students from 113 states of the former Soviet Union, Europe, Asia, Latin America and Africa have studied at our academy. Over this period 3,000 physicians, dentists and paediatricians have been trained for foreign countries.

They not only improved the quality of the teaching, but also created a solid foundation of scientific research. By the 90's, the Izhevsk State Medical Institute had become a large teaching and scientific centre, not only in the Udmurt Republic, but in the Russian Federation. These improvements allowed the institution to achieve the status of Academy in 1995.



## Izhevsk City

Izhevsk is a large industrial city with the population over 600,000 people. It was established in 1760 around an ironwork plant. Now it's famous as a city where AK-47 is produced and where its creator Mikhail Kalashnikov lived.

If you are interested in nature beauties, you should enjoy the view from Mt. Ural in Sarapul (100 kms from Izhevsk). You may go there by car or bus too (single ticket costs about 160 Roubles).

And if you want to go to Moscow or St.Petersburg it's also not a problem, because Izhevsk is well connected with other cities by railway and air. The cost of single ticket is 2500 and 6000 roubles relatively.



# Medicine

Students master three main specialities: therapy, surgery, obstetrics and gynaecology.

# Dentistry

Department trains students in conservative, restorative, operative, prosthetic, paediatric dentistry and maxillofacial surgery.



# Post Graduation

Established in 1991, the department is responsible for monitoring postgraduate medical education. Its activities include organization, coordination and control of the teaching and learning process and are carried out in the following directions:

- Internship;
- Residency;
- Ph.D. degree program.



# Russian Language

Founded in 1992, the Centre is intended not only to prepare for the entering examinations but mostly to help Applicants to accommodate to the academy educational system. Training is also provided to foreign nationals who wish to learn Russian language, if they wish to pursue courses in Russian language.



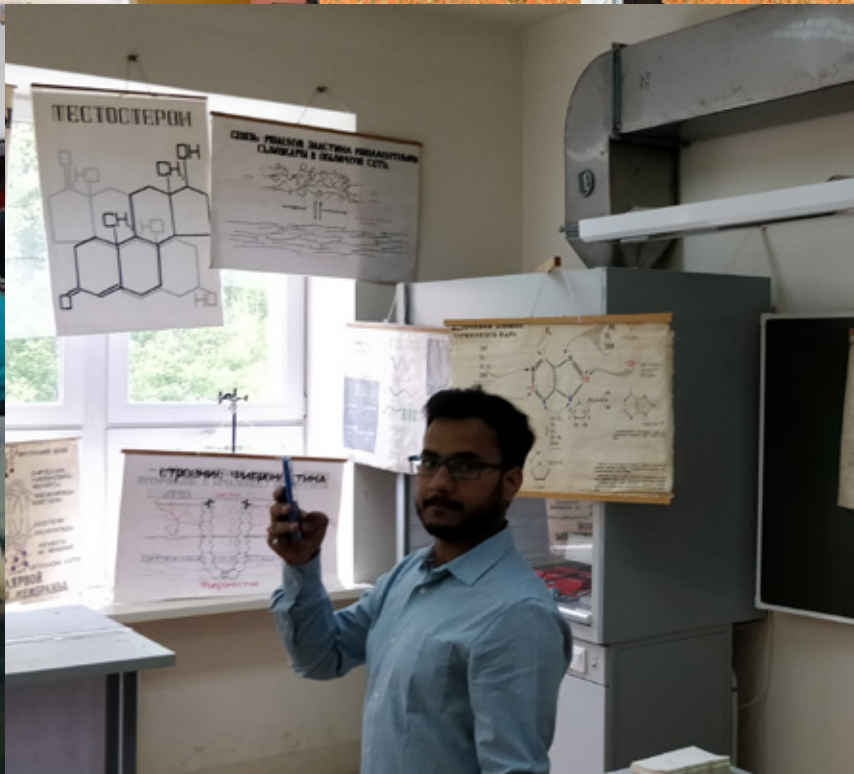
# Why to choose ISMA?

- The most affordable fee structure for students and parents all over the world
- Digital education (Samsung tablet free) with preloaded e-books
- Fully campus system (Hostel available to all)
- Exclusive portal for Indian students for post-admission management



## Admission Procedure

- Step 1 : Submit soft copy or hard copy of documents (10th & 12th mark-sheet, NEET result & passport, if ready)
- Step 2 : Submit filled up Application Form & Undertaking Form provided by us along with above set of documents.
- Step 3 : Admission Letter will be issued within next 1 week confirming your admission.
- Step 4 : Submit original 10th mark-sheet, 12th mark-sheet, passport, 10 passport size photos.
- Step 5 : Invitation letter will be issued from Immigration department and submitted to Embassy of Russia in India.
- Step 6 : Visa application will be submitted along with invitation letter for issuance of study visa.
- Step 7 : Submit HIV Report and any other medical reports as required by university
- Step 8 : Currency exchange (Assistance provided by us) of minimum 1st year's fees & other expenses
- Step 9 : All original documents & passport submitted returned to students in office along with visa and apostle.
- Step 10 : Final instructions & guidelines provided in our office for departure from Delhi & arrival at destination.
- Step 11 : Gather at airport for departure where our representative will be available till your departure.
- Step 12 : Meet our representative at Izhevsk airport on arrival and follow the further steps as instructed for enrollment



# ACCOMMODATION



Quality accommodation is provided to Indian students.



Indian students are accommodated on separate floor. Each floor is equipped with kitchen, reading hall and separate block system for boys and girls.



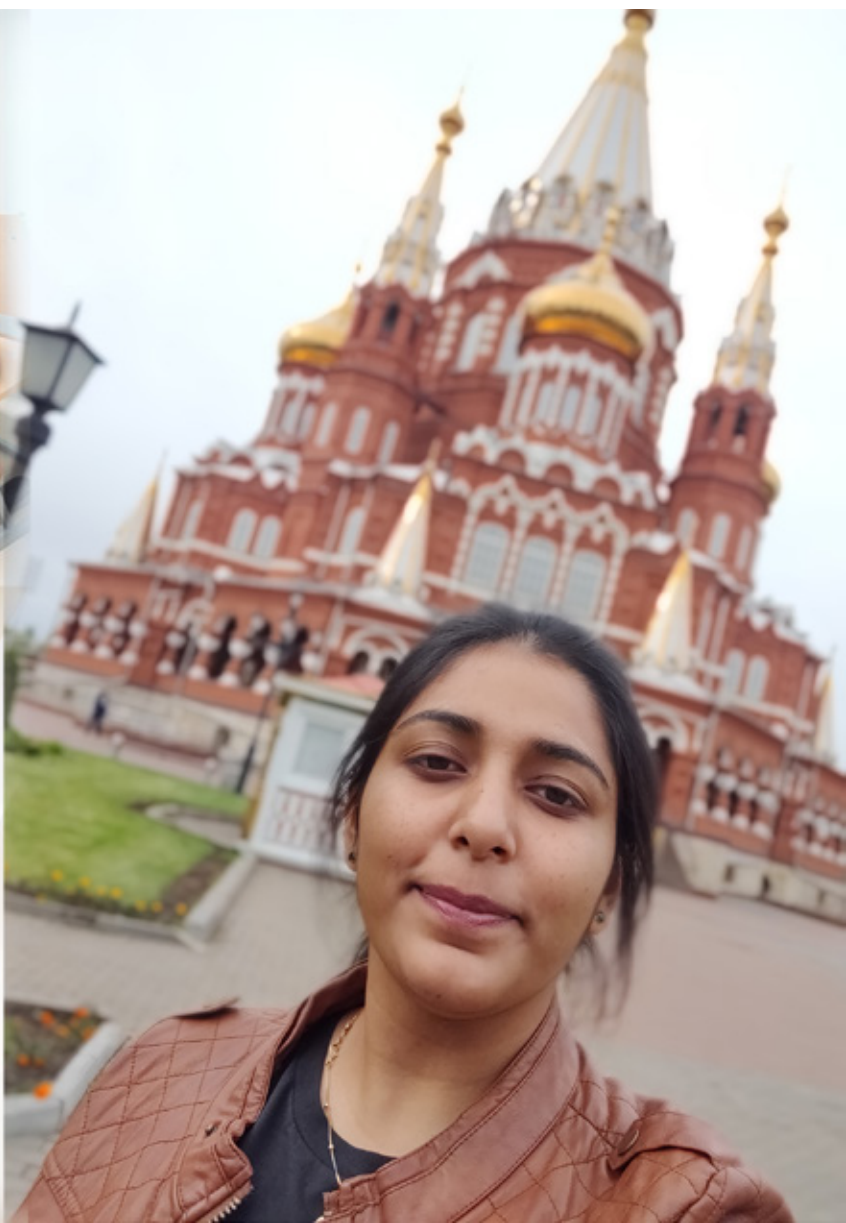
Reading hall is useful for students who wish to study in spare time without disturbing their block mates or even roommates.



Kitchen has direct gas supply or electric burners which serve the purpose of cooking their favorite Indian dishes anytime.

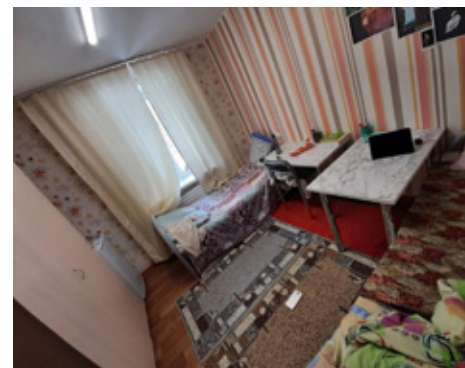


Each room is furnished with new furniture which includes dining table, study table, bed, wardrobe, shelf for books, curtains and even a refrigerator so that students can feel at home even immediately after arrival.





Post admission management is one of those ignored aspects for many institutions.



We understand it very better due to rich experience and that's why we have dedicated a separate portal for students.



This portal shows recent progress of students in each subject and discipline and keeps guardian and parents in course of the action.

[www.isma.in](http://www.isma.in)



**EXCLUSIVE CHANNEL**